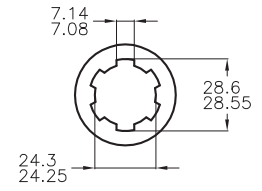
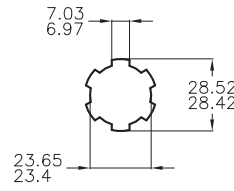
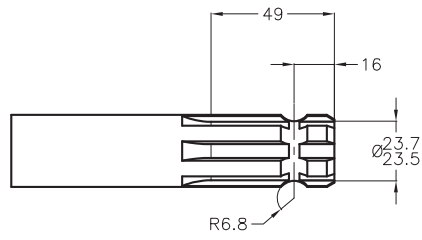
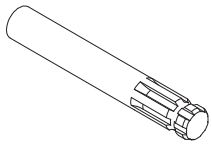


Валы- соединители

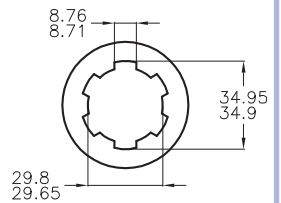
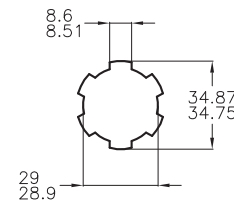
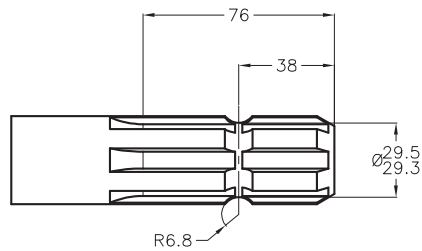
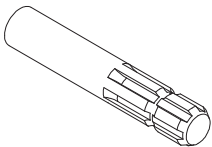
Размеры и передаваемая мощность

Валы-соединители

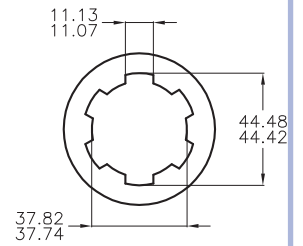
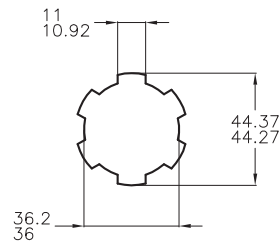
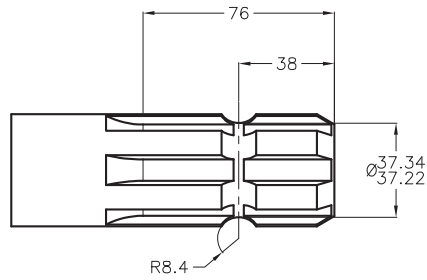
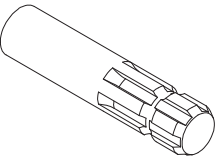
1 1/8"–6



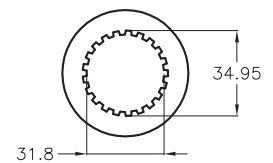
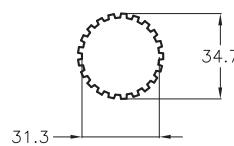
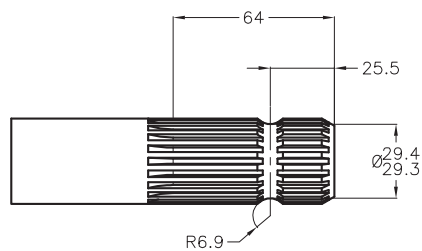
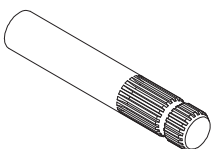
1 3/8"–6



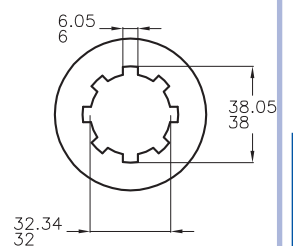
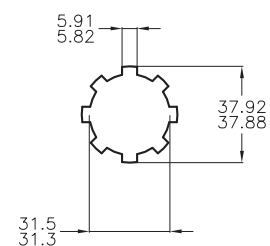
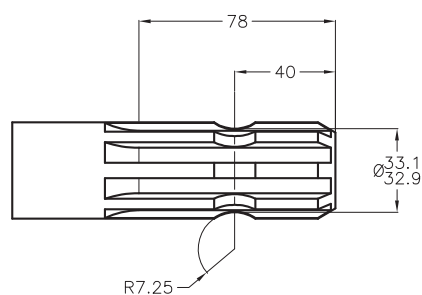
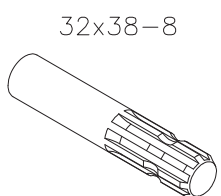
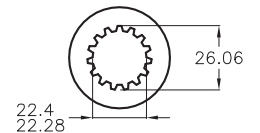
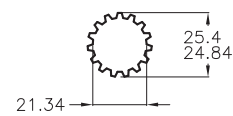
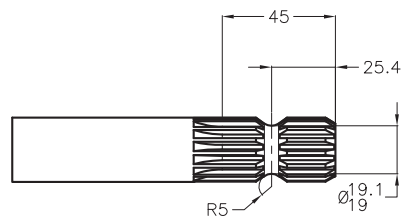
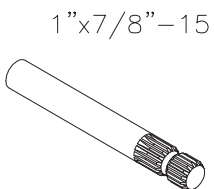
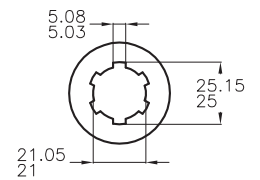
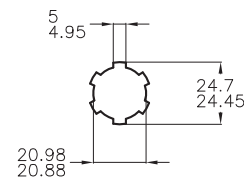
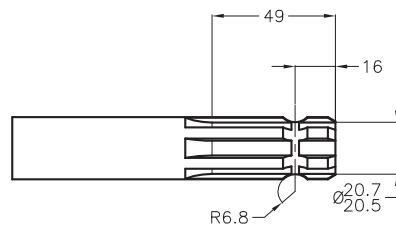
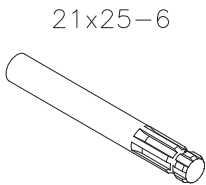
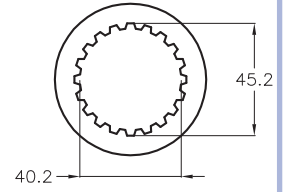
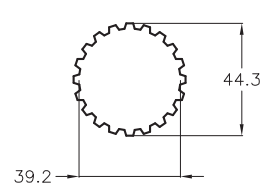
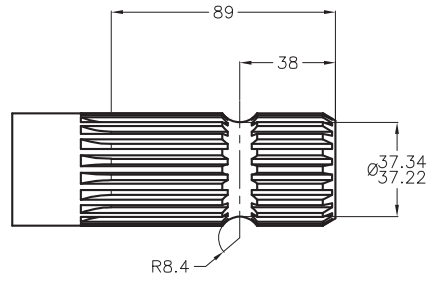
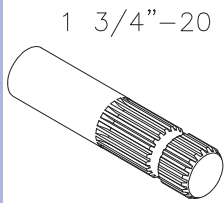
1 3/4"–6



1 3/8"–21



Валы -соединители

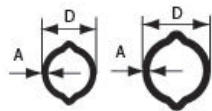


Размеры и мощность передачи



Универсальный шарнир - Размеры и мощность передачи

Серия	Крестовина 	Профиль трубы 			Мощность передачи										Защита 			
					Динамическая												Стат.	
					540 об.мин.*				1.000 об.мин.*				Max. P-kit	Max. E-kit		Max.		
					Power P-kits		Power E-kits		Power P-kits		Power E-kits						Nm	Nm
D x A (mm)	D x A (mm)	D x A (mm)	kW*	HP*	kW*	HP*	kW*	HP*	kW*	HP*	Nm	Nm	Nm	No.				
AB1	22.0 x 54.0	26.5 x 3.4	32.5 x 2.5	11	15	14	19	17	23	22	29	342	398	1150	904-1000-***			
AB2	23.8 x 61.2	29.0 x 4.1	36.0 x 3.2	16	21	19	25	24	33	29	38	493	527	1700	904-2500-***			
AB3	27.0 x 70.0	36.0 x 3.2	43.5 x 3.4	21	29	28	38	33	44	44	58	668	807	2000	904-2500-***			
AB4	27.0 x 74.6	36.0 x 3.9	43.5 x 3.4	27	36	34	45	41	56	52	70	836	960	3400	904-2500-***			
AB5	30.2 x 79.4	45.0 x 4.2	51.5 x 3.0	39	52	49	65	60	81	75	100	1212	1382	5300	904-3500-***			
AB6	30.2 x 92.0	45.0 x 4.2	54.0 x 4.5	48	64	59	79	73	99	91	122	1483	1687	4300	904-3500-***			
AB7N	34.9 x 94.0	45.0 x 5.4	54.0 x 4.5	59	79	70	94	91	122	108	145	1835	1993	5900	904-3500-***			
AB8	34.9 x 106.5	54.0 x 4.5	63.0 x 4.1	75	100	90	120	115	154	138	185	2316	2553	6000	904-4500-***			
AB9	41.0 x 108.0	54.0 x 4.9	63.0 x 4.1	89	120	113	151	138	185	173	232	2781	3206	7850	904-4500-***			
AM77S	45.0 x 126.0	54.0 x 5.9	66.0 x 5.7	-	-	128	171	-	-	197	264	-	5084	12430	904-4600-***			



	D x A (mm)			kW*	HP*	kW*	HP*	kW*	HP*	kW*	HP*	Nm	Nm	Nm	No.
AW10	22.0 x 54.8	23.5 x 4.0	30.0 x 2.9	11	15	14	19	17	23	22	29	349	406	1150	904-2500-***
AW10S		23.5 x ----	30.0 x 2.9												
AW20	23.8 x 61.2	34.5 x 4.0	41.0 x 2.9	16	21	19	25	24	33	29	38	493	527	1700	904-2500-***
AW21	27.0 x 74.6	34.5 x 4.0	41.0 x 2.9	27	36	34	45	41	56	52	70	836	960	3400	904-2500-***
AW21S		39.5 x 4.5	48.0 x 3.8												904-2500-***
AW35	32.0 x 76.0	39.5 x 4.5	48.0 x 3.8	39	52	49	66	59	80	76	102	1197	1402	5300	904-3500-***



	D x A (mm)			kW*	HP*	kW*	HP*	kW*	HP*	kW*	HP*	Nm	Nm	Nm	No.
AW35S	32.0 x 76.0	51.0 x ----	61.0 x 4.3	39	52	49	66	59	80	76	102	1197	1402	5300	904-3500-***
AW36	36.0 x 88.8	51.0 x ----	61.0 x 4.3	60	80	70	94	92	124	107	144	1864	1987	5900	904-3600-***
AW26	42.0 x 104.0	61.0 x 6.0	71.5 x 5.0	85	113	111	149	130	175	171	230	2628	3166	7850	904-4500-***

* относится к универсальным шарнирам с рабочим углом 5° и ресурсом 1000 часов

*** Длина Lz (cm)

Размеры и мощность передачи



Широкоугольные шарниры- размеры и мощность передачи

Серия	Крестовина 	Профиль трубы 		Мощность передачи										Защита			
				Динамическая												Стат.	
				540 об.мин.*				1.000 об.мин.*				Max. P-kit	Max. E-kit	Max.			
				Power P-kits		Power E-kits		Power P-kits		Power E-kits					Nm	Nm	
A x B (mm)	D x C (mm)	D x A (mm)	D x A (mm)	kW*	HP*	kW*	HP*	kW*	HP*	kW*	HP*	Nm	Nm	Nm	No.		
AB2-80°	22 x 61 24 x 76	29.5 x 4.2	36.0 x 3.2	16	21	19	25	24	33	29	38	493	527	1700	914-3000-***		
AB4-80°	27 x 81.8	36.5 x 4.2	43.5 x 3.2	--	--	39	52	--	--	72	97	--	1186	2938	914-3100-***		
AB6-80°	28.6 x 81.3 31.8 x 108.0	45.0 x 4.3	54.0 x 4.3	--	--	58	77	--	--	89	119	--	1491	4519	914-3200-***		
AB7N-80°	31.8 x 81.3 31.8 x 109.2	45.0 x 5.6	54.0 x 4.3	58	77	77	103	89	119	118	158	1469	1638	5649	914-3300-***		
AB8-80°	33.3 x 94.5 38.9 x 110.7	54.0 x 4.7	63.0 x 3.9	87	117	--	--	134	179	--	--	2260	--	7344	914-3400-***		
AB9-80°	33.3 x 94.5 38.9 x 110.7	54.0 x 5.2	63.0 x 3.9	--	--	112	151	--	--	173	232	--	2712	7344	914-3400-***		

	A x B (mm) D x C (mm)			kW*		HP*		kW*		HP*		Nm	Nm	Nm	No.
		D x A (mm)	D x A (mm)	kW*	HP*	kW*	HP*								
AW20-80°	22 x 61 24 x 76	35.0 x 4.2	41.0 x 2.7	16	21	19	25	24	33	29	38	493	527	1700	914-3000-***
AW21-80°	27 x 81.8	35.0 x 4.2	41.0 x 2.7	--	--	39	52	--	--	72	97	--	1186	2938	914-3100-***
AW35-80°	28.6 x 81.3 31.8 x 108.0	40.0 x 4.8	48.0 x 3.6	42	57	58	77	65	87	89	119	1356	1491	4519	914-3200-***

	A x B (mm) D x C (mm)			kW*		HP*		kW*		HP*		Nm	Nm	Nm	No.
		D x A (mm)	D x A (mm)	kW*	HP*	kW*	HP*								
AW36-80°	31.8 x 81.3 31.8 x 109.2	51.5 x ---	61.0 x 4.0	58	77	77	103	89	119	118	158	1469	1638	5649	914-3300-***

* относится к широкоугольным шарнирам с рабочим углом 10° и ресурсом 1000 часов

*** Длина Lz (см)

Качество соответствует.
Каждый раз.

Соединители
и Размеры